



Calculated hydrodynamic power.



WOMA®

Ultra-high pressure units.



Water as a tool

The power of innovation as a source of growth.

Development competence and high-performance technologies in action for progress.

Hydrodynamic power as a tool

... this classic fundamental idea of using the mechanical action of flowing water purposefully and efficiently has been the driving force of our work for almost 50 years.

Through our focused research and development, today, we have mastered systems with water pressures in excess of 58 000 psi/4 000 bar - which is four times the water pressure at the deepest point in the oceans.

Whether cleaning, removing material or cutting – our innovative system solutions unify precision with high power, lower fuel consumption and maximum life. Savings is our motto.

Together with our expertise in all matters related to hydrodynamic power and our commitment to quality service, which is guaranteed by a 24-hour hotline as well as by prompt spare parts delivery and rental service, we ensure high reliability of all solutions – and satisfied customers in industry.

Contents

2 WOMA®

WOMA® Ultra-high pressure water jetting technology

- 4 EcoMaster® 1000 M/Z/ARP
- EcoMaster® 700 Z/ARP
- EcoMaster® 550 M/Z/ARP
- EcoMaster® 400 M/Z/ARP
- EcoMaster® 250 M/Z/ARP



- 8 TwinJet® 3000
- TwinJet® 2800
- TwinJet® 2500



- 12 EcoMaster® MK 3 3000
- EcoMaster® MK 3 2800
- EcoMaster® MK 3 2500



- 16 EcoPro® 2500



- 20 EcoCold® TwinJet 1000



WOMA® Ultra-high pressure hot water jetting technology

- 24 EcoTherm® 800
- EcoTherm® 600



WOMA® High-pressure trolleys

- 28 EcoCold® 500 E
- EcoCold® 350 E
- EcoCold® 280 E



- EcoCold® 500 B
- EcoCold® 350 B
- EcoCold® 500 D

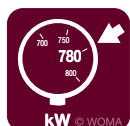


- 32 WOMA® Icons
- 33 WOMA® Group

4-5-6-7

WOMA® Ultra-high pressure water jetting technology

EcoMaster® 1000 M/Z/ARP® I 700 Z/ARP®



optional:



Overview



Highlights

I 550 M/Z/ARP® | 400 M/Z/ARP® | 250 M/Z/ARP®



All illustrations are only examples of available models and may not necessarily depict actual models.

- ❶ WOMATIC 4
- ❷ High-tech workshop room with workbench, heating and lighting
- ❸ Multi-user, up to 6 guns possible simultaneously
- ❹ Safe-step, retractable staircase ladder (EXI, BG-TEST-CERT)
- ❺ Lance compartment, up to 4.5 m
- ❻ Ostelation particle filter, spark arrester and noise muffler with oxidation catalytic converter
- ❼ Hose reel
- ❽ Auxiliary heating



Highlights



Ideal for large volumes

With operating pressures up to 21750 psi/1500 bar and rated delivery up to 605 l/min*, this series provides the ideal system for the cleaning of tanks.

The pressure-rpm regulation ensures long life simultaneously with minimised fuel consumption. The automatic status monitoring of the **WOMATIC 4** always has operations under control and ensures a high degree of application safety. Since the system works without bypass water, a low-wear, minimised-cost of operation is ensured. If desired, we can supply all systems in this series either diesel-powered or electrically powered, as mobile or stationary units. The low-noise system is equipped with a safety trough so that even if damaged, operating fluids are not released into the environment.

Technical Data

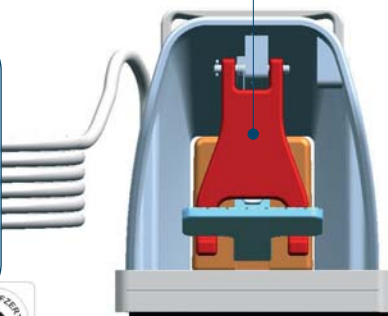
	250 M	400 M	550 M	1000 M
Max. operating pressure	43 500 psi/ 3 000 bar	43 500 psi/ 3 000 bar	43 500 psi/ 3 000 bar	43 500 psi/ 3 000 bar
Max. flow rate	40 l/min.*	70 l/min.*	106 l/min.*	186 l/min.*
Max. power	147 kW	259 kW	403 kW	700 kW

Technical Data

	250 Z/ARP®	400 Z/ARP®	550/700 Z/ARP®	1000 Z/ARP®
Max. operating pressure	21 750 psi/ 1500 bar	21 750 psi/ 1500 bar	21 750 psi/ 1500 bar	21 750 psi/ 1500 bar
Max. flow rate	476 l/min.*	822 l/min.*	955 l/min.*	1700 l/min.*
Max. power	183 kW	452 kW	580 kW	780 kW

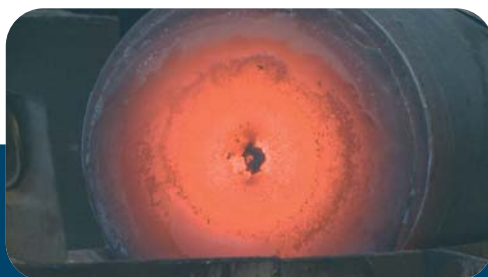
* 1 liter $\hat{=}$ 3.785 US.liq.gal

Large protective hood and mechanical safety latch to prevent accidental operation of the foot pedal.



Recommended accessories

- ☐ Safety foot-valve (EXI, BG-TEST-CERT)
- ☐ VacuJet 3000
- ☐ TankMaster®

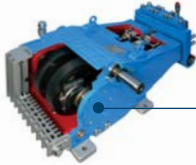


Applications

Stand-alone systems

ARP® high-pressure plunger pumps have been specially developed for sewer-cleaning vehicles as well as to pump water containing abrasive materials.

Ultra-high pressure pump 250 HP



We can also supply ARP® pumps as complete systems, e.g. as rolling containers.

Thanks to its narrow construction, the WOMA® 150 Z is ideally suited for use in tight spaces, e.g. in gangways of ships. The model is sea water-resistant and extremely light.

The powerful multi-talent that makes simultaneous tank cleaning and manual cleaning with a gun possible.

WOMA® designs, manufactures and installs complete high-pressure units and systems for operating pressures up to 58000 psi / 4000 bar. All the systems can be set up to run either by electric motors or IC engines. They can be supplied for stationary operation as well as mobile operation at construction sites. If required, the systems can be delivered with soundproofing.



Vehicle with 250 ARP® pump

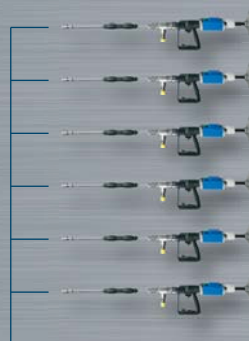


Container with WOMA® 250 ARP® unit

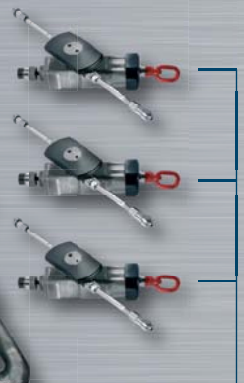
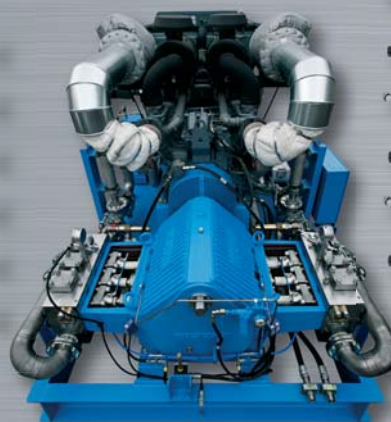


WOMA® 150 Z

WOMA® 1000 Z



Connections for up to 12 guns or

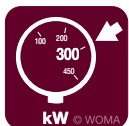


Connections for up to 6 TankMaster®

8-9-10-11

WOMA® Ultra-high pressure water jetting technology

TwinJet® 2 x 3000 | 2 x 2800 | 2 x 2500



optional:



Overview



Recommended accessories



All illustrations are only examples of available models and may not necessarily depict actual models.

- ❶ Wireless remote control, optional
- ❷ Swivel hose connection up to 43500 psi / 3000 bar
- ❸ Speedy 3000, E 02, E 03, E 05, E 09
- ❹ Orbimaster®
- ❺ Whirl Jet Nozzle
- ❻ Eco Top Rotating Cleaner for high surface production
- ❼ ECO TOP Cutter 3000-EX ¹⁾

This list is just a sample of our comprehensive range of accessories.

¹⁾ max. 23 l/min. and max.* 36250 psi / 2500 bar



Recommended accessories



Doubly flexible

The TwinJet® is a master of flexibility where cleaning or maintaining large civil engineering projects and industrial plants are concerned.

The innovative system solution is designed with two high-pressure pumps. With it, depending on your requirement, you can operate one or two guns. If you need all the water discharge of both pumps for one gun, that is also possible without any problems.

The system is controlled by the **WOMATIC 4**, which we have developed ourselves. It combines operational status monitoring with pressure-rpm regulation. What this means for you is less wear, higher reliability and fuel savings of up to 30 %.

Depending on your specific needs, we can supply the TwinJet® either diesel-powered or electrically powered, and as a stationary or mobile unit. The system is equipped with a safety trough so that even if damaged, operating fluids are not released into the environment.

Technical Data

	TwinJet® 690.2300	TwinJet® 690.2300	TwinJet® 690.2301	TwinJet® 690.2301
Max. operating pressure ¹⁾	2 x 36250 psi/ 2 x 2500 bar	2 x 36250 psi/ 2 x 2500 bar	2 x 40600 psi/ 2 x 2800 bar	2 x 43500 psi/ 2 x 3000 bar
Max. flow rate	2 x 20 l/min.*	2 x 26 l/min.*	2 x 20 l/min.* 2 x 26 l/min.*	2 x 18 l/min.*
High-pressure pump	WOMA® 185 M P 16	WOMA® 250 M P 18	WOMA® 250 M P 16	WOMA® 250 M P 15
Power ²⁾	Volvo Diesel 295 kW	Volvo Diesel 295 kW	Volvo Diesel 313 kW	Volvo Diesel 295 kW
Fuel tank	500 l* Diesel	500 l* Diesel	560 l* Diesel	500 l* Diesel
Water tank	80 l*	80 l*	80 l*	80 l*
Noise level	≤ 85 dB(A)	≤ 85 dB(A)	≤ 85 dB(A)	≤ 85 dB(A)
H.P. connection	9/16-18 UNF LH	9/16-18 UNF LH	9/16-18 UNF LH	9/16-18 UNF LH
Empty weight				
stationary	4000 kg	4000 kg	4300 kg	4000 kg
mobile	5100 kg	5100 kg	5400 kg	5100 kg
Dimensions (L x W x H)				
stationary	3800 x 1600 x 1900 mm	3800 x 1600 x 1900 mm	4000 x 1600 x 1900 mm	3800 x 1600 x 1900 mm
mobile ³⁾	5600 x 2300 x 2600 mm	5600 x 2300 x 2600 mm	5800 x 2300 x 2600 mm	5600 x 2300 x 2600 mm

¹⁾ E-EXI-design also available as option.

²⁾ IVECO engine also available as options.

³⁾ Towing bar also available as option.

* 1 liter ≙ 3.785 US.liq.gal

Standard accessories

- ☐ 2 x high-pressure guns, lance, nozzle connection and nozzle
- ☐ 2 x high-pressure hoses 20 m
- ☐ 2 x cable reel with 30 m electric cable



Applications

Highlights

- ☐ Independent operation of two work areas by means of the two-gun system – giving 100 % more output
- ☐ Option of doubling the water volume for a gun
- ☐ High system safety with the operational status monitoring system **WOMATIC 4**
- ☐ Long life and operating cost minimisation thanks to pressure-rpm regulation and pressure-less circulation
- ☐ Highest environmental standard in the form of the safety trough
- ☐ Flexibility due to stationary or mobile models and the option of IC engines or electric motors
- ☐ Low-noise operation provided by soundproofing hood made of aluminium (≤ 85 dB(A) in 7 m)
- ☐ Minimised weight due to the use of special materials

12-13-14-15

WOMA® Ultra-high pressure water jetting technology

EcoMaster® MK 3 3000 | 2800 | 2500



optional:



Overview



1



2



3



4

Recommended accessories



All illustrations are only examples of available models and may not necessarily depict actual models.

- ❶ Swivel hose connection up to 43500 psi / 3000 bar
- ❷ Speedy 3000, E 02, E 03, E 05, E 09
- ❸ VacuJet 3000
- ❹ Eco Top Rotating Cleaner for high surface production
- ❺ ECO TOP Cutter 3000-EX
- ❻ Wireless remote control, optional
- ❼ Safety foot valve (EXI, BG-TEST-CERT)

This list is just a sample of our comprehensive range of accessories.

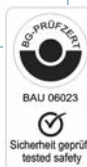


5

6

7

Recommended accessories



Large protective hood and mechanical safety latch to prevent accidental operation of the foot pedal.



The Grandmaster

The MK 3 is the Grandmaster of cleaning and maintenance of large civil projects and industrial plants. Its operating pressure can be increased from 36250 to 43500 psi/2500 to 3000 bar, a competitive advantage that is unparalleled in its class.

This system solution also unifies all the WOMA strengths. These include, for example:

- The easy-to-understand **WOMATIC 4** controller, which ensures a high degree of operational safety through operational status monitoring.
- The pressure-rpm regulation, which makes a reduction in fuel consumption by 30 % possible.
- The pressure-less circulation, which allows lower wear – and hence a longer life.

Depending on your individual requirements, we can supply the MK 3 either diesel-powered or electrically powered, and as a stationary or a mobile unit. The system is equipped with a safety trough so that even if damaged, operating fluids are not released into the environment.

Technical Data

	EcoMaster® ¹⁾ MK 3 690.2405	EcoMaster® ¹⁾ MK 3 690.2104	EcoMaster® ¹⁾ MK 3 690.2104	
Max. operating pressure	36250-40600 psi/ 2500- 2800 bar	36250 psi/ 2500 bar	43500 psi/ 3000 bar	
Max. flow rate	20 l/min.*	26 l/min.*	18 l/min.*	
High-pressure pump	WOMA® 150/185 M P 16	WOMA® 250 M P 18	WOMA® 250 M P 15	
Power ²⁾	Iveco Diesel 130 kW	Iveco Diesel 130 kW	Iveco Diesel 130 kW	
Fuel tank	200l* Diesel	200l* Diesel	200l* Diesel	
Water tank	40l*	40l*	40l*	
Noise level	≤ 85 dB(A)	≤ 85 dB(A)	≤ 85 dB(A)	
H.P. connection	9/16-18 UNF LH	9/16-18 UNF LH	9/16-18 UNF LH	
Empty weight	2310 kg	2310 kg	2310 kg	
Dimensions ^{3), 4)} (L x W x H)	4100 x 1930 x 2000 mm	4100 x 1930 x 2000 mm	4100 x 1930 x 2000 mm	

¹⁾ E-EXI-design also available as option.

²⁾ DEUTZ engine also available as option.

³⁾ Adjustable-height towing bar also available as option.

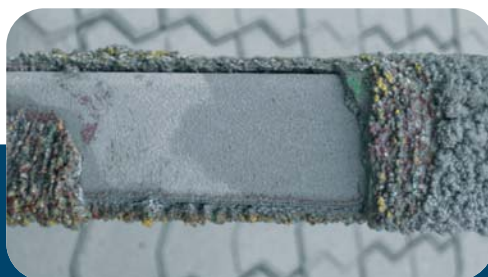
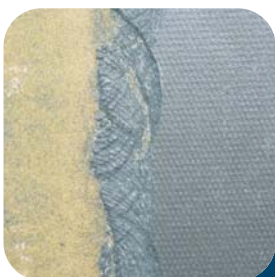
⁴⁾ Stationary or mobile.

* 1liter ≙ 3.785 US.liq.gal



Standard accessories

- ☐ 1 x high-pressure gun, lance, nozzle connection and nozzle
- ☐ 1 x high-pressure hose 20 m
- ☐ 1 x cable reel with 30 m electric cable and plug



Applications

Highlights

- ☐ High system safety with the operational status monitoring system **WOMATIC 4**
- ☐ Long life and operating cost minimisation thanks to the pressure-rpm regulation, the pressure-less circulation and patented valve design
- ☐ Option for increasing the operating pressure from 36250 to 43500 psi / 2500 to 3000 bar
- ☐ Highest environmental standard in the form of the safety trough
- ☐ Flexibility due to stationary or mobile models and the option of IC engines or electric motors
- ☐ Low-noise operation provided by soundproofing hood made of aluminium (≤ 85 dB(A) in 7 m)
- ☐ HP pump compliant with the ATEX standard
- ☐ EG Machinery Directive 2006/42/EG

16-17-18-19

WOMA® Ultra-high pressure water jetting technology

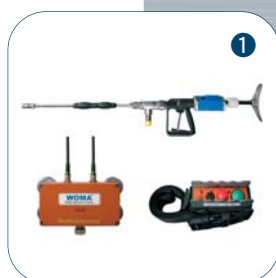
EcoPro® 2500



optional:



Overview



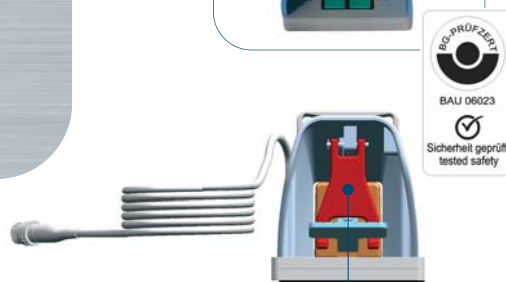
Recommended accessories



All illustrations are only examples of available models and may not necessarily depict actual models.

- ❶ Wireless remote control
- ❷ Swivel hose connection up to 43500 psi / 3000 bar
- ❸ Speedy 3000, E02, E03, E05, E09
- ❹ VacuJet 3000
- ❺ Eco Top Rotating Cleaner for high surface production
- ❻ WOMA® Speed Control® 3000
- ❼ Safety foot valve (EXI, BG-TEST-CERT)

This list is just a sample of our comprehensive range of accessories.



Large protective hood and mechanical safety latch to prevent accidental operation of the foot pedal.

Recommended accessories



Unique in its class

The EcoPro® 2500 is unique in its class and is used for all kinds of work in large civil projects and industrial plants.

EcoPro® 2500 is distinguished by its weight-optimised and space-optimised construction, thanks to which it can be towed by a broad range of vehicles. The very short set-up times allow particularly fast and flexible deployment at the site.

The innovative controller **WOMATIC 4** ensures safe operation through its automatic operational status monitoring. In addition, pressure-rpm regulation and a patented valve design ensure less wear, a reduction of up to 30 % in fuel consumption and long life of the system.

The 5-chamber tank system including the safety trough has proven itself in practice preventing operational fluids from being released into the environment even after damage.

Technical Data

	EcoPro® 2500 ¹⁾ 691.0632		
Max. operating pressure	36250 psi/ 2500 bar		
Max. flow rate	11.2 l/min.*		
High-pressure pump	WOMA® 70 M P 12		
Power ²⁾	VW AVM-TDI 60 kW		
Fuel tank	200 l* Diesel		
Water tank	200 l*		
Antifreeze tank	25 l*		
Noise level	≤ 70 dB(A)		
H.P. connection	9/16-18 UNF LH		
Empty weight	1200 kg		
Dimensions ^{3), 4)} (L x W x H)	4100 x 1940 x 2000 mm		

¹⁾ E-EXI-design also available as option.

²⁾ DEUTZ engine also available as option.

³⁾ Adjustable-height towing bar also available as option.

⁴⁾ Stationary or mobile.

* 1 liter ≙ 3.785 US.liq.gal

Standard accessories

- ☐ 1 x high-pressure gun, lance, nozzle connection and nozzle
- ☐ 1 x high-pressure hose 20 m
- ☐ 1 x cable reel with 30 m electric cable and plug



Applications

Highlights

- ☐ High system safety with the operational status monitoring system **WOMATIC 4**
- ☐ Long life and operating cost minimisation thanks to the pressure-rpm regulation and the pressure-less circulation
- ☐ High environmental standard in the form of the tank-in-tank system including a safety trough
- ☐ Flexibility due to stationary or mobile models
- ☐ Antifreeze tank
- ☐ Fuel consumption that is up to 30 % lower
- ☐ Low-noise operation provided by soundproofing hood made of GRP* (≤ 70 dB(A) in 7 m)
- ☐ Unlimited possibilities for use with internally or externally driven water-power tools
- ☐ Pump compliant with the ATEX standard
- ☐ EG Machinery Directive 2006/42/EG

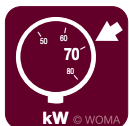
* glass fibre reinforced plastic

20-21-22-23

WOMA® Ultra-high pressure water jetting technology

EcoCold® TwinJet 1000

Overview



optional:



Recommended accessories



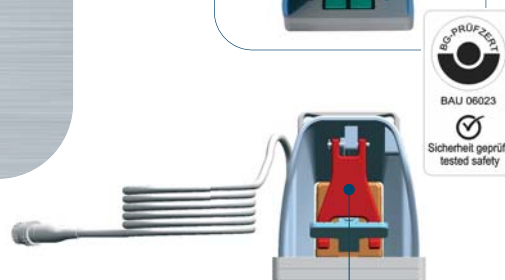
All illustrations are only examples of available models and may not necessarily depict actual models.

- ❶ Wireless remote control
- ❷ Swivel hose connection up to 43500 psi / 3000 bar
- ❸ Water/abrasive-sandblasting system
- ❹ Eco Top Rotating Cleaner for high surface production
- ❺ Whirl Jet Nozzle
- ❻ WOMA® Speed Control® 3000
- ❼ Safety foot valve (EXI, BG-TEST-CERT)

This list is just a sample of our comprehensive range of accessories.



Recommended accessories



Large protective hood and mechanical safety latch to prevent accidental operation of the foot pedal.



Completely thorough

This innovative system solution, with an operating pressure up to 14500 psi/1000 bar, covers a gap in the market for cold water systems.

Based on the proven TwinJet principle, two high-pressure pumps work independently of one another to ensure that one or two guns can be optionally utilized. In addition, by connecting both the systems together, it is possible to supply one gun with twice the water quantity. This means an increase in the power output by 100 %.

The EcoCold® TwinJet 1000 has a very compact design. As a result, it can be set up quickly and flexibly at the site and can be transported with a large number of possible towing vehicles.

Other advantages:

- Operational safety through automatic operational status monitoring system **WOMATIC 4**.
- Minimised wear, fuel consumption reduced by 30 % and long life through pressure-rpm regulation as well as patented valve design.
- Integrated environment protection with a 5-chamber tank system including safety trough, which prevents operating fluids from being released.



Technical Data

	EcoCold® ¹⁾ TwinJet 1000 691.0622		
Max. operating pressure	2 x 14500 psi/ 2 x 1000 bar		
Max. flow rate	2 x 15 l/min.*, 1 x 30 l/min.*		
High-pressure pump	2 x WOMA® 70 Y P 14		
Power	VW AVM-TDI 60 kW		
Fuel tank	200 l* Diesel		
Water tank	200 l*		
Antifreeze tank	25 l*		
Noise level	≤ 70 dB(A)		
H.P. connection	2 x M24 x 1.5		
Empty weight	1200 kg		
Dimensions ^{2), 3)} (L x W x H)	4100 x 1940 x 2000 mm		

¹⁾ E-EXI-design also available as option.

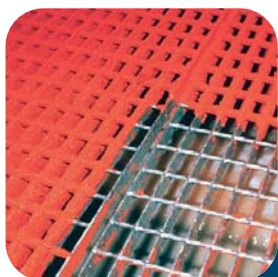
²⁾ Adjustable-height towing bar also available as option.

³⁾ Stationary or mobile.

* 1 liter ≙ 3.785 US.liq.gal

Standard accessories

- ☐ 1 x high-pressure gun, lance, nozzle connection and nozzle
- ☐ 1 x high-pressure hose 20 m
- ☐ 1 x cable reel with 30 m electric cable and plug, adapter for dual pump combination



Applications

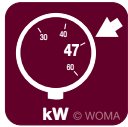
Highlights

- ☐ Option of doubling the water quantity for a HP gun, and as a result, increasing the power output by 100 %
- ☐ Easy transport due to the weight and space-optimizing design
- ☐ High system safety with the operational status monitoring system **WOMATIC 4**
- ☐ Fuel consumption that is up to 30 % lower
- ☐ Long life and operating cost minimisation thanks to the pressure-rpm regulation and the patented valve design
- ☐ The most powerful in its class
- ☐ Antifreeze tank
- ☐ Pump compliant with the ATEX standard
- ☐ EG Machinery Directive 2006/42/EG

24-25-26-27

WOMA® Ultra-high pressure hot water jetting technology

EcoTherm® 800 I 600



optional:



Overview



Recommended accessories



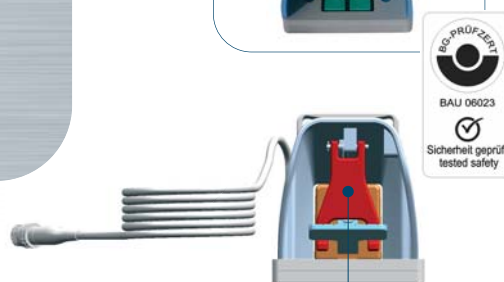
All illustrations are only examples of available models and may not necessarily depict actual models.

- ❶ Wireless remote control
- ❷ Swivel hose connection up to 43500 psi / 3000 bar
- ❸ FloorMaster®
- ❹ WOMA® Speed Control® 3000
- ❺ Whirl Jet Nozzle
- ❻ Orbimaster®
- ❼ Safety foot valve (EXI, BG-TEST-CERT)

This list is just a sample of our comprehensive range of accessories.



Recommended accessories



Large protective hood and mechanical safety latch to prevent accidental operation of the foot pedal.





A unique price-performance ratio

With the systems EcoTherm® 600 and EcoTherm® 800, we offer a rating class that is unique in the hot water domain.

The EcoTherm® 600 stands out for a price level that is normally characteristic of devices with a far lower output rating. An unbeatable price-performance ratio, which, at a higher level, also holds true for the EcoTherm® 800.

The weight-optimised and space-optimised design of the systems makes fast and flexible deployment at the site possible. In addition, they can be towed by almost any medium-sized car.

The pressure-rpm regulator, intake valve lifting and operational status monitoring controlled by the **WOMATIC 4**, guarantee less wear, a fuel consumption reduction of 30 %, long life and operational safety. A 5-chamber tank system reliably prevents operating fluids like fuel, heating oil or softeners from being released into the environment.

Technical Data

	EcoTherm® 600 ¹⁾ 691.0602	EcoTherm® 800 ¹⁾ 691.0612		
Max. operating pressure	1450-8700 psi/ 100-600 bar	1450-11600 psi/ 100-800 bar		
Max. flow rate	28 l/min.*	21 l/min.*		
High-pressure pump	WOMA® 70 Y P 18	WOMA® 70 Y P 16		
Power	VW ADG 1,9 l* 34 kW	VW ADG 1,9 l* 34 kW		
Water temperature	max. 98° C	max. 98° C		
Heating capacity	132 kW	132 kW		
Fuel tank	100 l* Diesel	100 l* Diesel		
Water tank	200 l*	200 l*		
Heating oil tank	100 l*	100 l*		
Antifreeze tank	25 l*	25 l*		
Softener	10 l*	10 l*		
Noise level	≤ 70 dB(A)	≤ 70 dB(A)		
H.P. connection	M24 x 1.5	M24 x 1.5		
Empty weight	1200 kg	1200 kg		
Dimensions ^{2), 3)} (L x W x H)	4100 x 1940 x 2000 mm	4100 x 1940 x 2000 mm		



Standard accessories

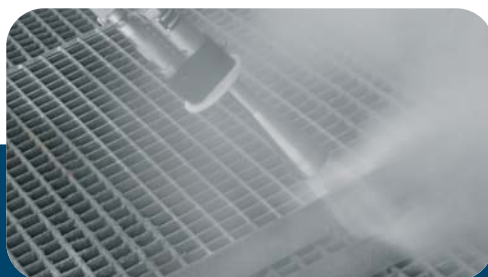
- ☐ 1 x high-pressure gun, lance, nozzle connection and nozzle
- ☐ 1 x high-pressure hose 20 m
- ☐ 1 x cable reel with 30 m electric cable

¹⁾ E-EXI-design also available as option.

²⁾ Adjustable-height towing bar also available as option.

³⁾ Stationary or mobile.

* 1 liter ≙ 3.785 US.liq.gal



Application

Highlights

- ☐ High system safety with the operational status monitoring system **WOMATIC 4**
- ☐ Long life thanks to the pressure-rpm regulation and patented valve design
- ☐ Best price-performance ratio, 20 % more output
- ☐ Up to 30 % fuel saving
- ☐ No bypass water
- ☐ High environmental standard thanks to 5-chamber tank system including safety trough
- ☐ Antifreeze tank
- ☐ Pump compliant with the ATEX standard
- ☐ EG Machinery Directive 2006/42/EG
- ☐ 2-channel control in 12/24V as well as EXI-controller

28-29-30-31

WOMA® High-pressure trolleys

EcoCold® 500 E | 350 E | 280 E



1)



Overview



Applications

EcoCold® 500 B | 350 B | 500 D



All illustrations are only examples of available models and may not necessarily depict actual models.

- ① Water/abrasive-sandblasting system
- ② High-pressure hose
- ③ Hotbox 350, 500 is the ideal complement for cold water units from WOMA®. Simply connect it to the cleaning device – the high-quality burner ensures the required water temperature – up to 98°C. ²⁾

This list is just a sample of our comprehensive range of accessories.



Recommended accessories

Technical Data

	③ Hotbox 500	③ Hotbox 350
Max. operating pressure	7250 psi/500 bar	5075psi/350 bar
Max. flow rate	11-28 l/min.*	11-28 l/min.*
Heating capacity	90 kW	90 kW
Empty weight	65 kg	65 kg
Water temperature	98° C	98° C



Flexible specialists

The handy electrically operated cold water units EcoCold® 280 E, EcoCold® 350 E and EcoCold® 500 E represent a large segment for industrial use. The cold water devices EcoCold® 350 B, EcoCold® 500 B and EcoCold® 500 D can run on petrol (B) or diesel (D). Particularly at construction sites, this makes them especially flexible cleaning professionals.

The units have various operating pressures. You can therefore always find an application that is tailored to your specific requirements. In addition, all the units stand out for their very low-noise operation. A constant pressure and low recoil forces at the high-pressure gun provide a high safety standard and ensure fatigue-free operation.

The ideal add-on

The Hotbox 350/500 is the ideal add-on for our cold-water units. Simply connect it to the cleaning equipment – the high-value mobile burner ensures the required water temperature. The maintenance-friendly compact units distinguish themselves by a high safety standard and are ideal for use when cleaning facades, buildings, industrial floors and lots more.

Adding a Hotbox 350/500 will turn your EcoCold-Series unit into a full Hot-Water-System – up to 98 °C.²⁾

Technical Data

	EcoCold® 280 E 001.1700 001.1701	EcoCold® 350 E 001.1702 001.1703	EcoCold® 500 E 001.1705 001.1706	
Max. operating pressure	4 060 psi/ 280 bar	5 075 psi/ 350 bar	7 250 psi/ 500 bar	
Max. flow rate	15 l/min.*	21 l/min.*	15 l/min.*	
Power	Electric motor 7.5 kW	Electric motor 15 kW	Electric motor 15 kW	
Voltage	400 V/50 HZ 400 V/60 HZ	400 V/50 HZ 400 V/60 HZ	400 V/50 HZ 400 V/60 HZ	
Rated current	15 A	30 A	30 A	
H.P. connection	M22 x 1.5 WGA	M22 x 1.5 WGA	M22 x 1.5 WGA	
Empty weight	125 kg	150 kg	150 kg	
Dimensions (L x W x H)	1100 x 750 x 700 mm	1100 x 750 x 700 mm	1100 x 750 x 700 mm	

Technical Data

	EcoCold® 350 B 001.1704	EcoCold® 500 B 001.1707	EcoCold® 500 D 001.1714	
Max. operating pressure	5 075 psi/ 350 bar	7 250 psi/ 500 bar	7 250 psi/ 500 bar	
Max. flow rate	21 l/min.*	15 l/min.*	15 l/min.*	
Power	Gasoline engine 16,4 kW	Gasoline engine 16,4 kW	Hatz Diesel 2G40 18 kW	
Fuel tank	20 l* Gasoline	20 l* Gasoline	7 l* Diesel	
H.P. connection	M22 x 1,5 WGA	M22 x 1,5 WGA	M22 x 1,5 WGA	
Empty weight	130 kg	130 kg	175 kg	
Dimensions (L x W x H)	750 x 850 x 950 mm	750 x 850 x 950 mm	1000 x 850 x 950 mm	

Standard accessories

- ☐ 1 x high-pressure gun, lance, nozzle connection and nozzle
- ☐ 1 x high-pressure hose 10 m
- ☐ 1 x Gauge and water filter in suction

¹⁾ Without 5-chamber tank system.

²⁾ Depends on the inlet water temperature.

* 1 liter $\hat{=}$ 3.785 US.liq.gal

Highlights

- ☐ Flexibility through compact design
- ☐ Can be supplied with electric motors as well as IC engines
- ☐ Pre-pressure monitoring (optional)
- ☐ Integrated pipe holder
- ☐ Self-priming
- ☐ Simple handling with the trolley principle
- ☐ Water filter



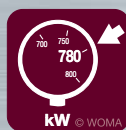
Low consumption ensures high environmental safety.



Especially light weight due to use of special materials.



Noise-insulating technologies ensure low-noise operation.



Maximum power rating (see icon).



Maximum operating pressure (see icon).



High system safety through the intelligent WOMATIC 4 controller.



Low fuel consumption through innovative pressure-rpm regulation.



Fitted with 2 high-pressure systems (TwinJet® technology).

Optional:



Available in explosion-proof design.



Available with wireless control.



Available with diesel drive.



Available with petrol drive.



Available with electrical drive.

WOMA® Group.
Always at your service.



**For things to go like clockwork for you,
we offer, world-wide**

- ☐ a reliable 24-hour service covering consultancy, maintenance work and repairs.
- ☐ a spare-parts service – from consulting to prompt delivery.
- ☐ a rental service – for fast, short-term requirements related to additional high-pressure technology.

For further information:

Phone: +49 2065 304-0

Fax: +49 2065 304-200

E-mail: service@woma.de

Service Hotline: +49 173 9606 400

